

Control (of death) - Demo Project

CinProCaS by:

Arpad Zsolt Varga
Music Copyright by © T-34 Hungarian
Music Band - IHDS
Producer: Arpad Zsolt Varga
Co-producer: Szabolcs Juhasz
Copyright © 2022 Arpad Zsolt Varga
All Right Reserved!

Copyright © 2024 Arpad Zsolt
Varga
Copyright by © Arpad Zsolt Varga
& Szabolcs Juhasz 2015.
Contact: cinprocasinfo@gmail.com
imagehdstudio@gmail.com
www.imagehdstudio.com

Final Draft
7/24/2024



Shot:	Long shot	Focus:	32.81ft/10m
Move:	Zoom In	Height:	1.64ft/0.50m
Lens:	Sony G Master Zoom 18-105mm F4.0	Dist.:	32.81ft/10m
Filter:	No.	Roll:	A Card
T-Stop:	5.6 Gain: 0 dB	Slate:	1/1
Shutter:	180° 1/60	Fps:	29.97



Shot:	Close-up	Focus:	4.92ft/1.50m
Move:	Fix camera shot	Height:	5.91ft/1.80m
Lens:	Sony G Master Zoom 18-105mm F4.0	Dist.:	4.92ft/1.50m
Filter:	No.	Roll:	A Card
T-Stop:	4 Gain: 0 dB	Slate:	1/2
Shutter:	180° 1/60	Fps:	29.97



Shot:	Close-up	Focus:	4.92ft/1.50m
Move:	Fix camera shot	Height:	5.91ft/1.80m
Lens:	Sony G Master Zoom 18-105mm F4.0	Dist.:	4.92ft/1.50m
Filter:	No.	Roll:	A Card
T-Stop:	4 Gain: 0 dB	Slate:	1/3
Shutter:	180° 1/60	Fps:	29.97

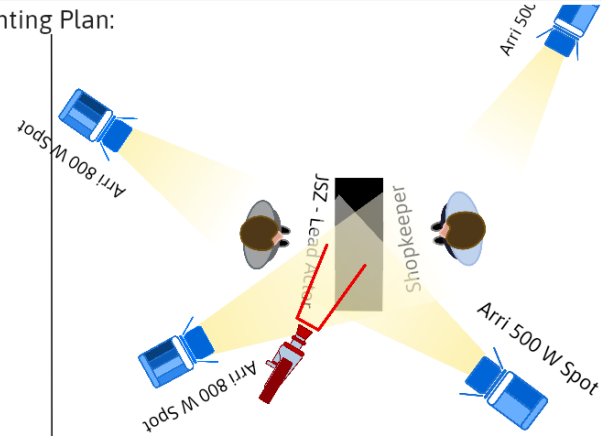
Film Stock: **16:9 Mode HD** LUT: **"FG_CineBasic".cube**

Film Rating: **ASA 500** F.candl.: **123** Lux: **1324.0**

Studio Interior **Exterior** Kelvin: **560** Mired: **1785.7**

Dawn **Day** Dusk Magic Hour Night

Lighting Plan:



Screenplay:

1 1. SCENE EXT. - IN FRONT OF MOTORCYCLE SHOP AFTERNOON 1
FADE IN!

PICTURE 1 Ext. - in front of Motorcycle shop Afternoon
In front of a Harley Davidson motorcycle shop stands the camera, in front of the store on their stands four beautiful engines. Slow start zooming ahead.
SOUND: MUSIC START!

PICTURE 2 Interior - Harley Shop Afternoon
Someone throws a wad of cash on the table, the camera is over the table, taking a closeup as the stack of cash falls into the picture.
SOUND: MUSIC

PICTURE 3 Interior Harley Shop Afternoon
A hand renders a Harley key - camera in closeup - from behind the counter, then another hand takes over, camera in closeup - takes the money from the counter and pulls his hand out of the picture.
SOUND: MUSIC(CONT'D)

Sound Stage: Hódmezővásárhely, Freedom street, Harley Davidson shop and the parking.

Sound Description: Music and Sennheiser boom. Atmo.

Special Effect: **NO** No.



SONY V1U </>



Shot:	Close up figures	Focus:	5.91ft/1.80m
Move:	Fix camera shot	Height:	5.91ft/1.80m
Lens:	Sony G Master Zoom 18-105mm F4.0	Dist.:	5.91ft/1.80m
Filter:	No.	Roll:	A Card
T-Stop:	4 Gain: 0 dB	Slate:	1/4
Shutter:	180° 1/60	Fps:	29.97

SONY V1U </>



Shot:	Long shot	Focus:	26.25ft/8m
Move:	Fix camera shot	Height:	4.59ft/1.40m
Lens:	Sony G Master Zoom 18-105mm F4.0	Dist.:	26.25ft/8m
Filter:	No.	Roll:	A Card
T-Stop:	4 Gain: 0 dB	Slate:	1/5
Shutter:	180° 1/60	Fps:	29.97

SONY V1U </>



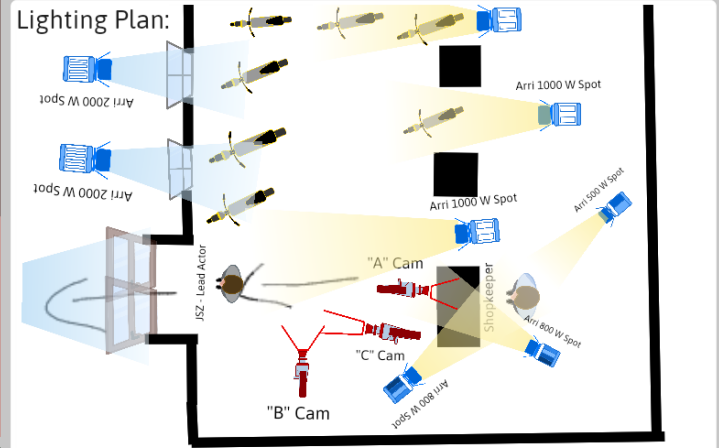
Shot:	Medium size figures	Focus:	13.12ft/4m
Move:	Fix camera shot	Height:	4.92ft/1.50m
Lens:	Sony G Master Zoom 18-105mm F4.0	Dist.:	13.12ft/4m
Filter:	No.	Roll:	A Card
T-Stop:	6.3 Gain: 0 dB	Slate:	1/6
Shutter:	180° 1/60	Fps:	29.97

Film Stock: **16:9 Mode HD** LUT:"FG_CineBasic".cube

Film Rating: **ASA 500** F.candl.: **123** Lux: **1324.0**

Studio Interior **Exterior** Kelvin: **560** Mired: **1785.7**

Dawn **Day** Dusk Magic Hour Night



Screenplay: **PAGE: 2 / Harley Shop**

CONTINUED:

PICTURE 4 Interior - Harley Shop Afternoon

The shopkeeper's face as he looks pleased after the man - in premiere plan, closeup.

SOUND: MUSIC(CONT'D)

PICTURE 5 Interior Harley Shop Afternoon

The camera shows the sideview of the rider who, starting from the counter toward the exit, the camera in left panorama, follows him a while until the Harleys available in the store come into the picture.

SOUND: MUSIC(CONT'D)

PICTURE 6 Interior Harley Shop Afternoon

The door closes behind the man leaving in riders garb, we do not see the man's face, he is with his back to you. Onl the door closes behind him.

SOUND: MUSIC(CONT'D)

Sound Stage: Hódmezővásárhely, Freedom street, Harley Davidson shop and the parking.

Sound Description: Music and Sennheiser boom. Atmo.

Special Effect: **NO** No.



Shot:	Close shot	Focus:	6.56ft/2m
Move:	Fix camera shot	Height:	0.66ft/0.20m
Lens:	Sony G Master Zoom 18-105mm F4.0	Dist.:	6.56ft/2m
Filter:	No.	Roll:	A Card
T-Stop:	5.6 Gain: 0 dB	Slate:	1/7
Shutter:	180° 1/60	Fps:	29.97



Shot:	Long shot	Focus:	13.12ft/4m
Move:	Fix camera shot	Height:	3.94ft/1.20m
Lens:	Sony G Master Zoom 18-105mm F4.0	Dist.:	13.12ft/4m
Filter:	No.	Roll:	A Card
T-Stop:	5.6 Gain: 0 dB	Slate:	1/8
Shutter:	180° 1/60	Fps:	29.97



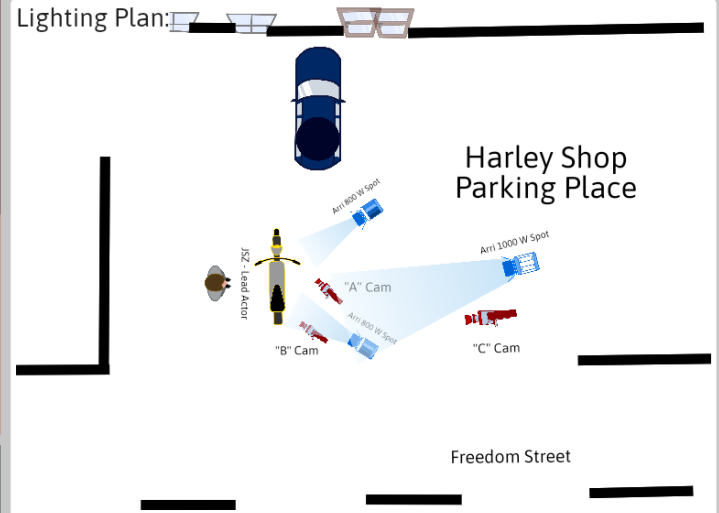
Shot:	Extreme close-up	Focus:	3.28ft/1m
Move:	Fix camera shot	Height:	5.58ft/1.70m
Lens:	Sony G Master Zoom 18-105mm F4.0	Dist.:	3.28ft/1m
Filter:	No.	Roll:	A Card
T-Stop:	5.6 Gain: 0 dB	Slate:	1/9
Shutter:	180° 1/60	Fps:	29.97

Film Stock: **16:9 Mode HD** LUT: **ab7.png**

Film Rating: **ASA 500** F.candl.: **123** Lux: **1324.0**

Studio Interior **Exterior** Kelvin: **560** Mired: **1785.7**

Dawn **Day** Dusk Magic Hour Night



Screenplay: **PAGE: 3 / Harley Shop**

CONTINUED:

PICTURE 7 Exterior before Motorcycle shop Afternoon

The camera shows the other side of the engine as two motorcycle boots come into the picture and stop. The rider stopped next to the chosen motorcycle.

SOUND: MUSIC(CONT'D)

PICTURE 8 Exterior before Motorcycle shop Afternoon

The camera is opposite the shop behind the motorcycle as JSZ gets on the Harley motorcycle. Little Total Plan.

SOUND: MUSIC(CONT'D)

PICTURE 9 Exterior before Motorcycle shop Afternoon

Close up of Hand as the key is inserted into the ignition of the Harley.

SOUND: MUSIC(CONT'D)

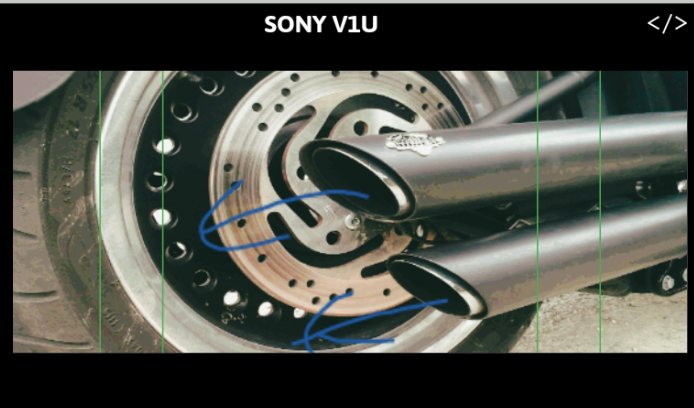
Sound Stage: Hódmezővásárhely, Freedom street, Harley Davidson shop and the parking.

Sound Description: Music and Sennheiser boom. Atmo.

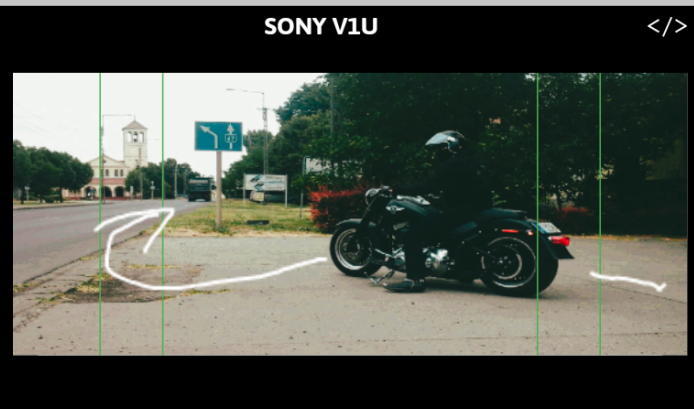
Special Effect: **NO** No.



Shot:	Extreme close-up	Focus:	3.28ft/1m
Move:	Fix camera shot	Height:	4.92ft/1.50m
Lens:	Sony G Master Zoom 18-105mm F4.0	Dist.:	3.28ft/1m
Filter:	No.	Roll:	A Card
T-Stop:	5.6 Gain: 0 dB	Slate:	1/10
Shutter:	180° 1/60	Fps:	29.97



Shot:	Extreme close-up	Focus:	3.94ft/1.20m
Move:	Fix camera shot	Height:	0.98ft/0.30m
Lens:	Sony G Master Zoom 18-105mm F4.0	Dist.:	3.94ft/1.20m
Filter:	No.	Roll:	A Card
T-Stop:	5.6 Gain: 0 dB	Slate:	1/11
Shutter:	180° 1/60	Fps:	29.97



Shot:	Long shot	Focus:	26.25ft/8m
Move:	Fix and follows actress move	Height:	4.92ft/1.50m
Lens:	Sony G Master Zoom 18-105mm F4.0	Dist.:	26.25ft/8m
Filter:	No.	Roll:	A Card
T-Stop:	5.6 Gain: 0 dB	Slate:	1/12
Shutter:	180° 1/60	Fps:	29.97

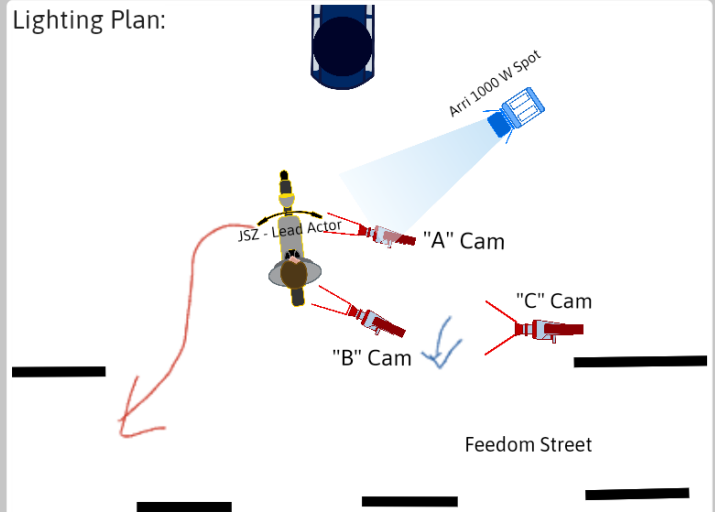
Film Stock: **16:9 Mode HD** LUT:"FG_CineDrama".cube

Film Rating: **ASA 500** F.candl.: **123** Lux: **1324.0**

Studio Interior **Exterior** Kelvin: **560** Mired: **1785.7**

Dawn **Day** Dusk Magic Hour Night

Lighting Plan:



Screenplay:

PAGE: 4 / Harley Shop

CONTINUED:

PICTURES 10 Exterior before Motorcycle shop Afternoon
Handclose Closeup, as gripping the steering and throttle to start the engine.

SOUND: MUSIC(CONT'D)

PICTURES 11 Exterior before Motorcycle shop Afternoon
Closeup of the exhaustpipes with the sound of the engine starting.

SOUND: MUSIC(CONT'D)

PICTURES 12 Exterior before Motorcycle shop Afternoon
The camera opposite the shop medium Total Plan shows as the motorist starts, turning to the left. The camera follows panorama. The motorists face is not visible, he just drives off onto the road and away.

SOUND: MUSIC(CONT'D)

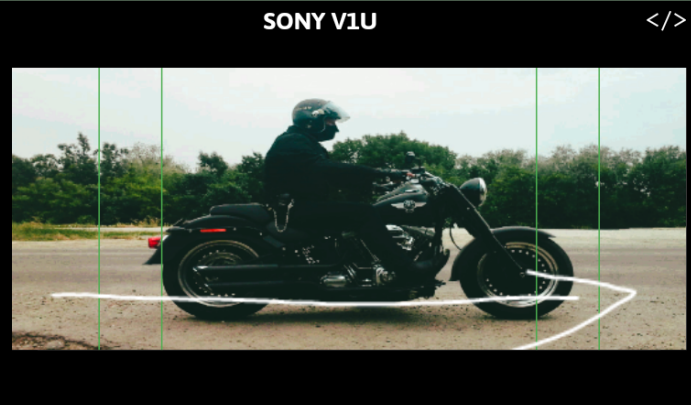
Sound Stage: Hódmezővásárhely, Freedom street, Harley Davidson shop and the parking.

Sound Description: Music and Sennheiser boom. Atmo.

Special Effect: **NO** No.



Shot:	Close up figures	Focus:	4.92ft/1.50m
Move:	Fix camera shot	Height:	4.92ft/1.50m
Lens:	Sony G Master Zoom 18-105mm F4.0	Dist.:	4.92ft/1.50m
Filter:	No.	Roll:	A Card
T-Stop:	5.6 Gain: 0 dB	Slate:	2/1
Shutter:	180° 1/60	Fps:	29.97



Shot:	Long shot	Focus:	13.12ft/4m
Move:	Fix camera shot	Height:	4.92ft/1.50m
Lens:	Sony G Master Zoom 18-105mm F4.0	Dist.:	13.12ft/4m
Filter:	No.	Roll:	A Card
T-Stop:	5.6 Gain: 0 dB	Slate:	2/2
Shutter:	180° 1/60	Fps:	29.97



Shot:	Close up figures face	Focus:	3.28ft/1m
Move:	Fix camera shot	Height:	4.92ft/1.50m
Lens:	Sony G Master Zoom 18-105mm F4.0	Dist.:	3.28ft/1m
Filter:	No.	Roll:	A Card
T-Stop:	5.6 Gain: 0 dB	Slate:	2/3
Shutter:	180° 1/60	Fps:	29.97

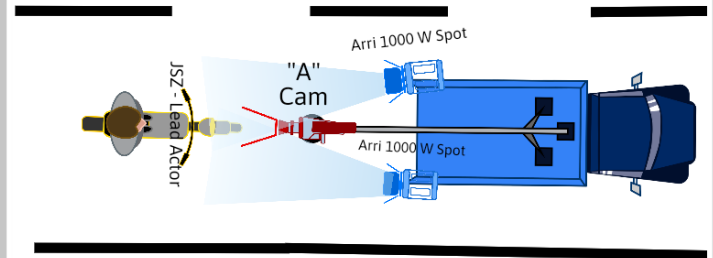
Film Stock: **16:9 Mode HD** LUT:"FG_CineDrama".cube

Film Rating: **ASA 500** F.candl.: **123** Lux: **1324.0**

Studio Interior **Exterior** Kelvin: **560** Mired: **1785.7**

Dawn **Day** Dusk Magic Hour Night

Lighting Plan:



Screenplay:

PAGE: 5 / One the road

2 2. SCENE PICTURE 13 EXT. MINDSZENTI ROAD AFTERNOON 2

The camera shows in closeup medium plan from the front the rider as he is traveling on the highway. His eyes are visible through the face mask over his mouth. The Plexiglas visor is left open.

SOUND: MUSIC

PICTURE 14 Exterior Mindszenti road Afternoon

The camera shows from the side of the road in American Plan as he is driving on the highway, the camera in panorama follows him from left to right.

SOUND: MUSIC(CONT'D)

PICTURES 15 Exterior Mindszenti road Afternoon

The camera shows the motorist JSZ side, closeup, as he enjoys the ride his expression changes, he recognizes the speed.

SOUND: MUSIC(CONT'D)

Sound Stage: Mártély City - road between all the Mindszenti City.

Sound Description: Music and Sennheiser boom. Atmo.

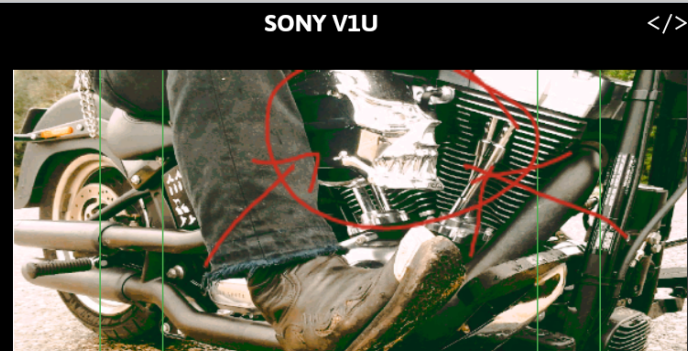
Special Effect: **NO** No.



Shot:	Close-up	Focus:	0.98ft/0.30m
Move:	Camera stays fixed	Height:	4.27ft/1.30m
Lens:	Sony G Master Zoom 18-105mm F4.0	Dist.:	0.98ft/0.30m
Filter:	No.	Roll:	A Card
T-Stop:	5.6 Gain: 0 dB	Slate:	2/4
Shutter:	180° 1/60	Fps:	29.97



Shot:	Long shot	Focus:	19.69ft/6m
Move:	Camera stays fixed	Height:	2.62ft/0.80m
Lens:	Sony G Master Zoom 18-105mm F4.0	Dist.:	19.69ft/6m
Filter:	No.	Roll:	A Card
T-Stop:	6.3 Gain: 0 dB	Slate:	2/5
Shutter:	180° 1/60	Fps:	29.97



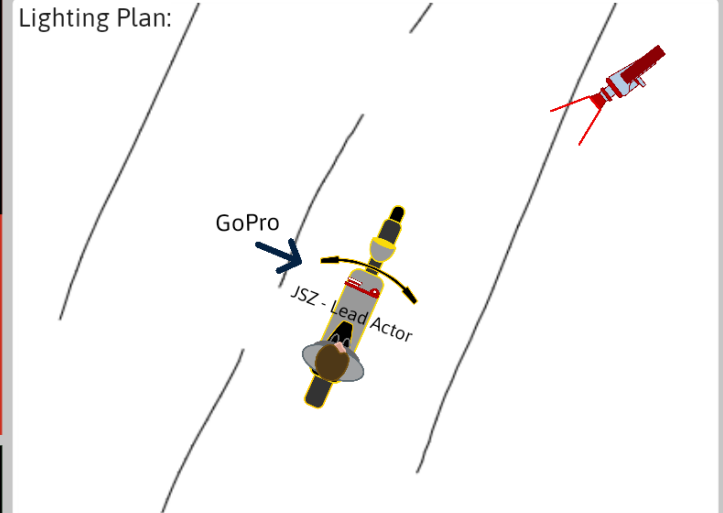
Shot:	Close shot	Focus:	3.28ft/1m
Move:	Camera stays fixed	Height:	0.98ft/0.30m
Lens:	Sony G Master Zoom 18-105mm F4.0	Dist.:	3.28ft/1m
Filter:	No.	Roll:	A Card
T-Stop:	5.6 Gain: 0 dB	Slate:	2/6
Shutter:	180° 1/60	Fps:	29.97

Film Stock: **16:9 Mode HD** LUT:"FG_CineWarm".cube

Film Rating: **ASA 500** F.candl.: **123** Lux: **1324.0**

Studio Interior **Exterior** Kelvin: **560** Mired: **1785.7**

Dawn **Day** Dusk Magic Hour Night



Screenplay: **PAGE: 6 / On the road**

CONTINUED:

PICTURE 16 Exterior Mindszenti road Afternoon

The camera shows the Harley's speedometer on the right side with the skull and crossbones, as it goes up, reaching the 100 and going above and moving on...

SOUND: MUSIC(CONT'D)

PICTURE 17 Exterior Mindszenti road - Late afternoon

The camera is put down on the road, speeding away next to it the Harley engine at high speed. Fixed Plan.

SOUND: MUSIC(CONT'D)

PICTURE 18 Exterior Mindszenti road - Late afternoon

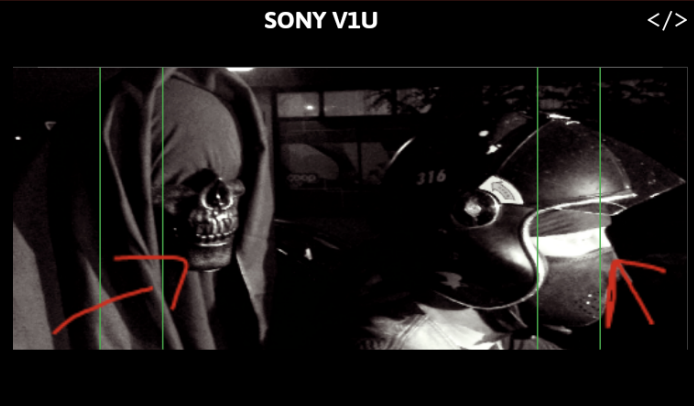
The camera, next to the moving Harley shows a sideview of the block, the camerapanorama moves quickly from the block to the rapidly rotating front wheel.

SOUND: MUSIC(CONT'D)

Sound Stage: Mártély City - road between all the Mindszent City.

Sound Description: Music and Sennheiser boom. Atmo.

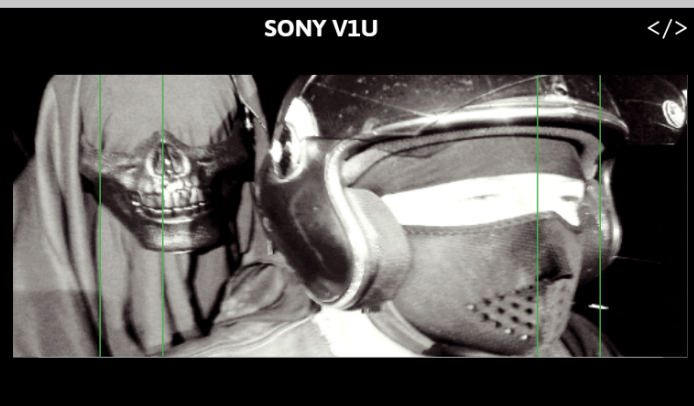
Special Effect: **NO** No.



Shot:	2 shot close up	Focus:	4.92ft/1.50m
Move:	Pan Up & Zoom In	Height:	4.92ft/1.50m
Lens:	Sony G Master Zoom 18-105mm F4.0	Dist.:	4.92ft/1.50m
Filter:	No.	Roll:	A Card
T-Stop:	2.8 Gain: 0 dB	Slate:	3/1
Shutter:	180° 1/60	Fps:	29.97



Shot:	Medium size figures	Focus:	8.20ft/2.50m
Move:	Pan Up & Zoom In	Height:	4.27ft/1.30m
Lens:	Sony G Master Zoom 18-105mm F4.0	Dist.:	8.20ft/2.50m
Filter:	No.	Roll:	A Card
T-Stop:	2.8 Gain: 0 dB	Slate:	3/2
Shutter:	180° 1/60	Fps:	29.97



Shot:	Close up figures face	Focus:	4.92ft/1.50m
Move:	Zoom in slow	Height:	4.92ft/1.50m
Lens:	Sony G Master Zoom 18-105mm F4.0	Dist.:	4.92ft/1.50m
Filter:	No.	Roll:	A Card
T-Stop:	2.8 Gain: 0 dB	Slate:	3/3
Shutter:	180° 1/60	Fps:	29.97

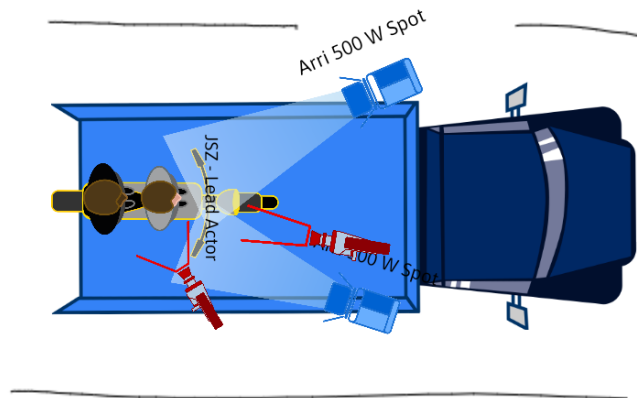
Film Stock: **16:9 Mode HD** LUT: **ab10.png**

Film Rating: **ASA 500** F.candl.: **12** Lux: **129.2**

Studio Interior **Exterior** Kelvin: **560** Mired: **1785.7**

Dawn Day **Dusk** Magic Hour Night

Lighting Plan:



Screenplay:

PAGE: 7 / Death in danger

3 3. SCENE PICTURE 19 EXT.MINDSZENTI ROADLATE AFTERNOON 3

The camera shows again the rider's face super close, and then begins to open up medium closeup and from behind him death with the scythe is coming.

SOUND: MUSIC

PICTURE 20 Exterior Mindszenti road Twilight

The camera in Total Plan, from in front of the rider shows as death with the scythe sits behind the rider enjoying the speed

SOUND: MUSIC(CONT'D)

PICTURE 21 Exterior Mindszenti road Demerung

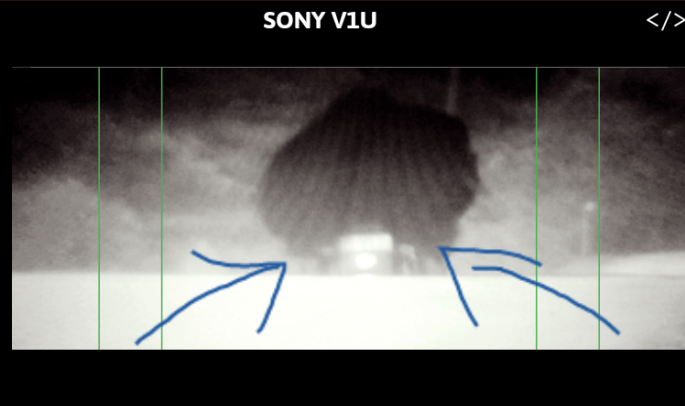
The rider's face in closeup as he enjoys the speed. Death sits behind him.

SOUND: MUSIC(CONT'D)

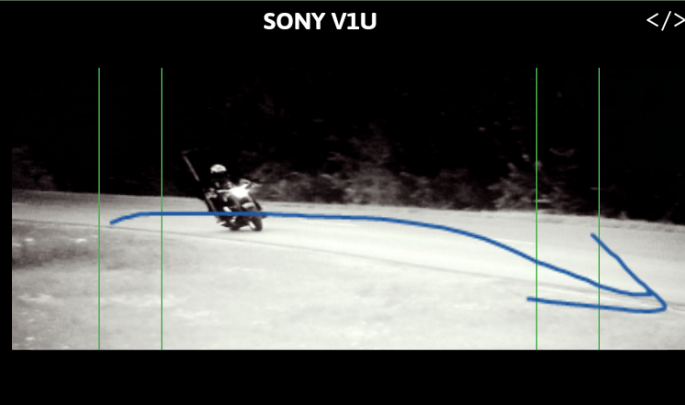
Sound Stage: Mártély City - road between all the Mindszenti City.

Sound Description: Music and Sennheiser boom. Atmo.

Special Effect: **NO** No.



Shot:	Telephoto	Focus:	229.66ft/70m
Move:	Fix and follows actor move	Height:	3.94ft/1.20m
Lens:	Sony G Master Zoom 18-105mm F4.0	Dist.:	229.66ft/70m
Filter:	No.	Roll:	A Card
T-Stop:	5.6 Gain: 0 dB	Slate:	3/4
Shutter:	180° 1/60	Fps:	29.97

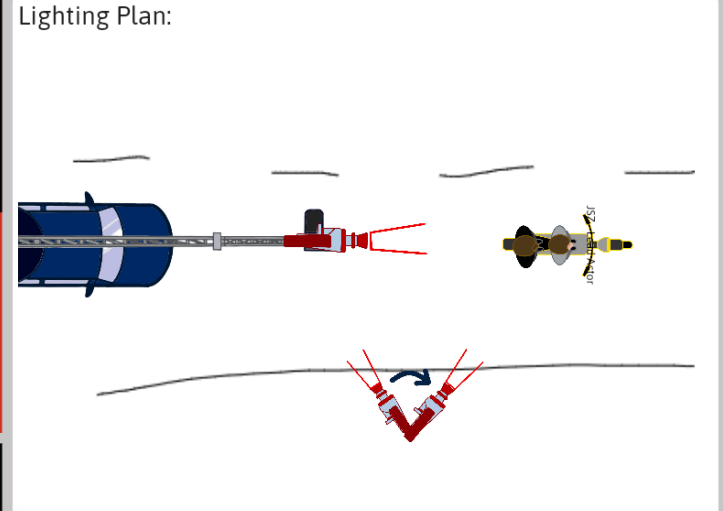


Shot:	Long shot	Focus:	164.04ft/50m
Move:	Fix and follows actor move	Height:	9.84ft/3m
Lens:	Sony G Master Zoom 18-105mm F4.0	Dist.:	164.04ft/50m
Filter:	No.	Roll:	A Card
T-Stop:	5.6 Gain: 0 dB	Slate:	3/5
Shutter:	180° 1/60	Fps:	29.97



Shot:	Close up figures	Focus:	3.94ft/1.20m
Move:	Pan Up & Zoom in slow	Height:	4.92ft/1.50m
Lens:	Sony G Master Zoom 18-105mm F4.0	Dist.:	3.94ft/1.20m
Filter:	No.	Roll:	A Card
T-Stop:	2.8 Gain: 0 dB	Slate:	3/6
Shutter:	180° 1/60	Fps:	29.97

Film Stock:	16:9 Mode HD	LUT:	ab10.png
Film Rating:	ASA 500	F.candl.:	12
Lux:	129.2	Studio:	Exterior
Kelvin:	560	Mired:	1785.7
Day:	Dusk	Magic Hour:	Night



Screenplay: **PAGE: 8 / Death in danger**

CONTINUED:

PICTURE 22 Exterior Mindszenti road Twilight

The camera moving behind the engine, filming forward, as death is covering the rider from the image with his cloak and the great shroud.

SOUND: MUSIC(CONT'D)

PICTURE 23 Exterior Mindszenti road Twilight

The camera is standing by the roadside (fixed plan) and the motor is speeding past him, behind him is Death who increasingly obscures the rider.

SOUND: MUSIC(CONT'D)

PICTURE 24 Exterior Mindszenti road Twilight

The camera shows the front of the rider as death with his robe starts to cover him, growing medium plan, slow zoom face closeups.

SOUND: MUSIC(CONT'D)

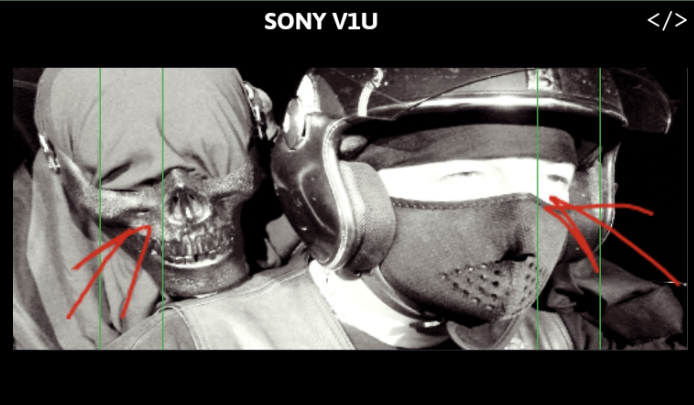
Sound Stage: Mártély City - road between all the Mindszent City.

Sound Description: Music and Sennheiser boom. Atmo.

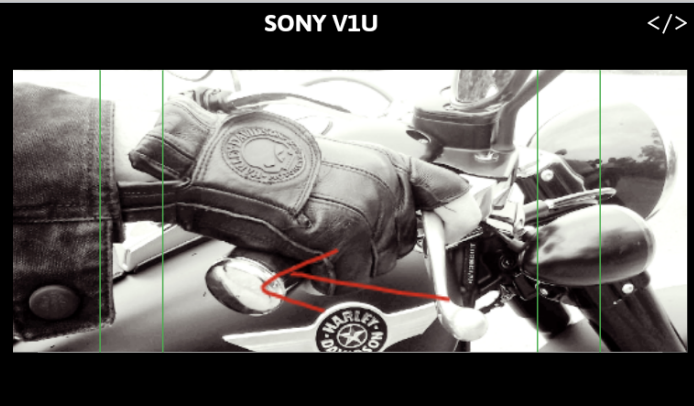
Special Effect: **NO No.**



Shot:	Close-up	Focus:	9.84ft/3m
Move:	Fix and follows actor move	Height:	0.98ft/0.30m
Lens:	Sony G Master Zoom 18-105mm F4.0	Dist.:	9.84ft/3m
Filter:	No.	Roll:	A Card
T-Stop:	5.6 Gain: 0 dB	Slate:	3/7
Shutter:	180° 1/60	Fps:	29.97



Shot:	Close up figures	Focus:	3.94ft/1.20m
Move:	Camera stays fixed	Height:	4.92ft/1.50m
Lens:	Sony G Master Zoom 18-105mm F4.0	Dist.:	3.94ft/1.20m
Filter:	No.	Roll:	A Card
T-Stop:	2.8 Gain: 0 dB	Slate:	3/8
Shutter:	180° 1/60	Fps:	29.97



Shot:	Close shot	Focus:	3.94ft/1.20m
Move:	Fix camera shot	Height:	4.92ft/1.50m
Lens:	Sony G Master Zoom 18-105mm F4.0	Dist.:	3.94ft/1.20m
Filter:	No.	Roll:	A Card
T-Stop:	5.6 Gain: 0 dB	Slate:	4/1
Shutter:	180° 1/60	Fps:	29.97

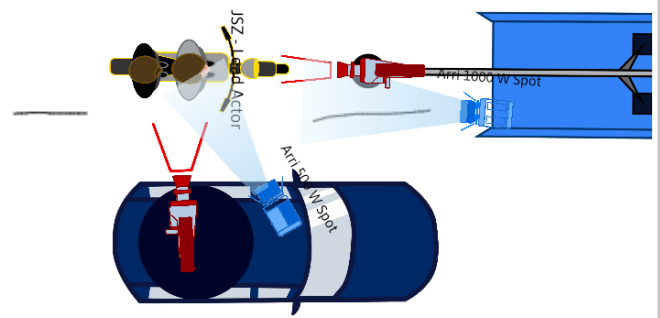
Film Stock: **16:9 Mode HD** LUT: **ab10.png**

Film Rating: **ASA 500** F.candl.: **100** Lux: **1076.4**

Studio Interior **Exterior** Kelvin: **560** Mired: **1785.7**

Dawn Day **Dusk** Magic Hour Night

Lighting Plan:



Screenplay:

PAGE: 9 / Death in danger

CONTINUED:

PICTURE 25 Exterior Mindszenti road Twilight

The camera is in the bend in the direction of Mindszent. The Harley comes into the picture from the left with death behind him, and as the road is rising and then steadily going out of the picture, thereafter at the bottom of the picture disappears completely.

SOUND: MUSIC(CONT'D)

PICTURE 26 Exterior Mindszenti road Twilight

The camera shows closeup side to the motor slight zoom on the fly, as he leans forward to death. Close up super close to the end when a slight smile appears on the motorists his face.

SOUND: MUSIC(CONT'D)

Sound Stage: Mártély City - road between all the Mindszent City.

Sound Description: Music and Sennheiser boom. Atmo.

Special Effect: **NO** No.



Shot:	Close shot	Focus:	0.98ft/0.30m
Move:	Camera stays fixed	Height:	4.59ft/1.40m
Lens:	Sony G Master Zoom 18-105mm F4.0	Dist.:	0.98ft/0.30m
Filter:	No.	Roll:	A Card
T-Stop:	5.6 Gain: 0 dB	Slate:	4/2
Shutter:	180° 1/60	Fps:	29.97



Shot:	Close shot	Focus:	3.28ft/1m
Move:	Fix camera shot	Height:	0.98ft/0.30m
Lens:	Sony G Master Zoom 18-105mm F4.0	Dist.:	3.28ft/1m
Filter:	No.	Roll:	A Card
T-Stop:	5.6 Gain: 0 dB	Slate:	4/3
Shutter:	180° 1/60	Fps:	29.97



Shot:	Long shot	Focus:	32.81ft/10m
Move:	Fix camera shot	Height:	4.92ft/1.50m
Lens:	Sony G Master Zoom 18-105mm F4.0	Dist.:	32.81ft/10m
Filter:	No.	Roll:	A Card
T-Stop:	5.6 Gain: 0 dB	Slate:	4/4
Shutter:	180° 1/60	Fps:	29.97

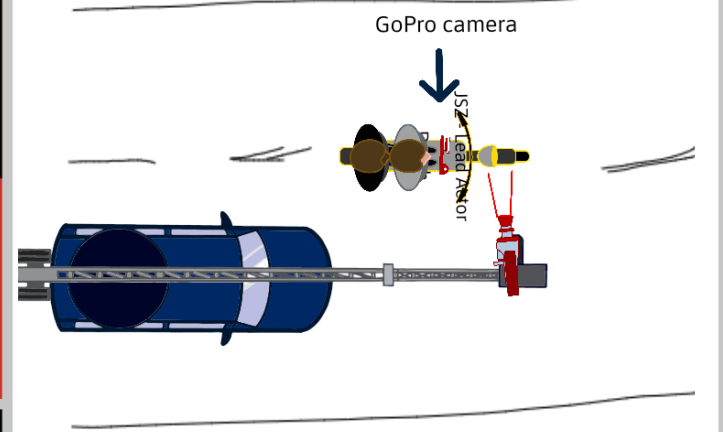
Film Stock: **16:9 Mode HD** LUT:"FG_CineWarm".cube

Film Rating: **ASA 500** F.candl: **100** Lux: **1076.4**

Studio Interior **Exterior** Kelvin: **560** Mired: **1785.7**

Dawn **Day** Dusk Magic Hour Night

Lighting Plan:



Screenplay:

PAGE: 9 / Safe driving

4 4. SCENE PICTURE 27 EXT. MINDSZENTI ROAD TWILIGHT 4

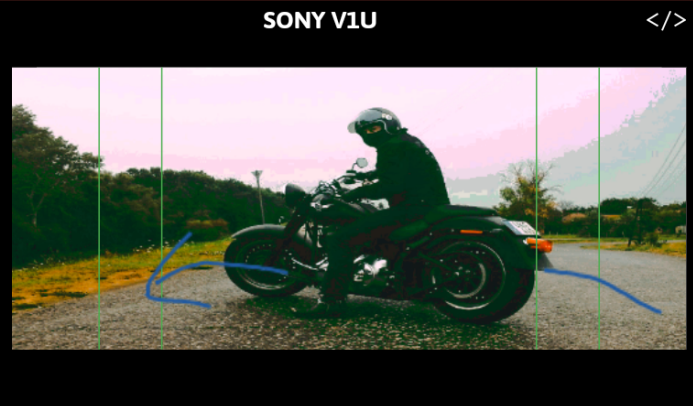
The camera moves by the rider and his right hand is shown in closeup as he takes off the gas.

SOUND: MUSIC

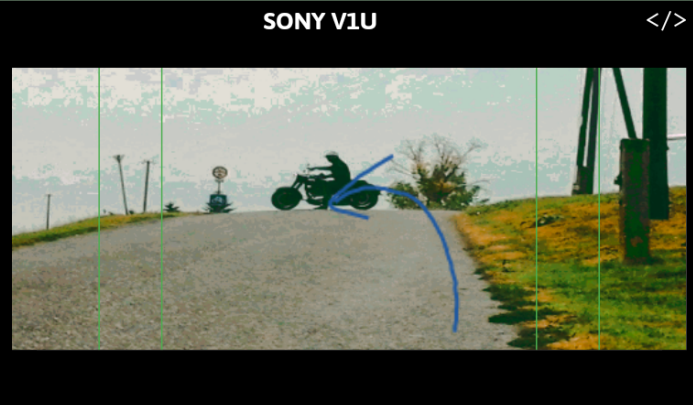
Sound Stage: Mártély City - road between all the Mindszent City.

Sound Description: Music and Sennheiser boom. Atmo.

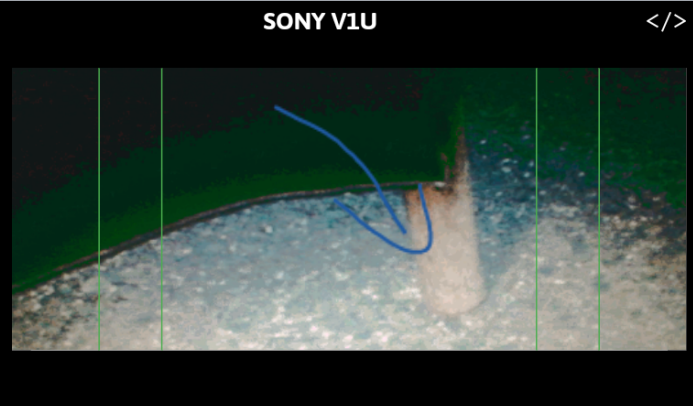
Special Effect: **NO** No.



Shot:	Medium size figures	Focus:	13.12ft/4m
Move:	Fix and follows actor move	Height:	4.92ft/1.50m
Lens:	Sony G Master Zoom 18-105mm F4.0	Dist.:	13.12ft/4m
Filter:	No.	Roll:	A Card
T-Stop:	5.6 Gain: 0 dB	Slate:	4/5
Shutter:	180° 1/60	Fps:	29.97



Shot:	Long shot	Focus:	49.21ft/15m
Move:	Camera stays fixed	Height:	4.92ft/1.50m
Lens:	Sony G Master Zoom 18-105mm F4.0	Dist.:	49.21ft/15m
Filter:	No.	Roll:	A Card
T-Stop:	6.3 Gain: 0 dB	Slate:	4/6
Shutter:	180° 1/60	Fps:	29.97



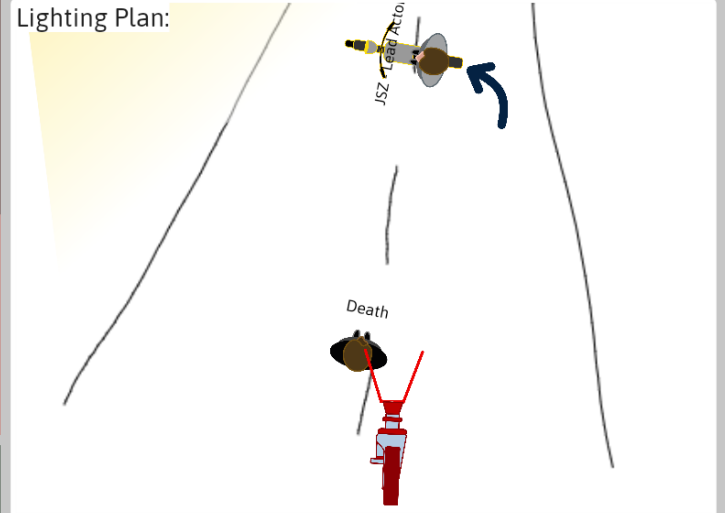
Shot:	Close shot	Focus:	3.28ft/1m
Move:	Camera stays fixed	Height:	1.64ft/0.50m
Lens:	Sony G Master Zoom 18-105mm F4.0	Dist.:	3.28ft/1m
Filter:	No.	Roll:	A Card
T-Stop:	3.2 Gain: 0 dB	Slate:	4/7
Shutter:	180° 1/60	Fps:	29.97

Film Stock: **16:9 Mode HD** LUT:"FG_CineWarm".cube

Film Rating: **ASA 500** F.candl: **100** Lux: **1076.4**

Studio Interior **Exterior** Kelvin: **560** Mired: **1785.7**

Dawn **Day** Dusk Magic Hour Night



Screenplay: **PAGE: 10 / Safe driving**

CONTINUED:

PICTURE 28 Exterior Mindszenti road Twilight

The camera shows the image of the speedometer in a closeup going down under a hundred at a quite brisk rate.

SOUND: MUSIC(CONT'D)

PICTURE 29 . Exterior Mindszenti road Demerung

The camera moves when the engine and the front wheel of a marked slowdown in motor shows closeup.

SOUND: MUSIC(CONT'D)

PICTURE 30 Exterior Mindszenti road Twilight

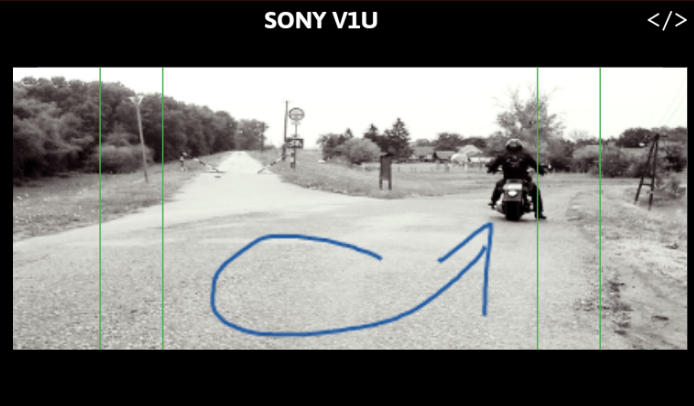
The camera is in the bend of the road towards the city. The 25 camera plan, as the road emerges from the bottom of the picture and death is no longer behind the motorist.

SOUND: MUSIC(CONT'D)

Sound Stage: Mártély City - road between all the Mindszent City.

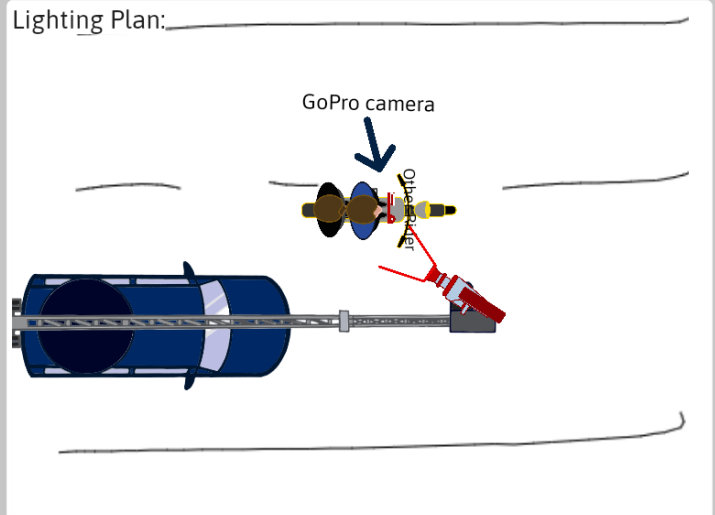
Sound Description: Music and Sennheiser boom. Atmo.

Special Effect: **NO No.**



Shot:	Long shot	Focus:	16.40ft/5m
Move:	Camera stays fixed	Height:	4.92ft/1.50m
Lens:	Sony G Master Zoom 18-105mm F4.0	Dist.:	16.40ft/5m
Filter:	No.	Roll:	A Card
T-Stop:	5.6 Gain: 0 dB	Slate:	4/8
Shutter:	180° 1/60	Fps:	29.97

Film Stock:	16:9 Mode HD	LUT:	ab10.png
Film Rating:	ASA 500	F.candl.:	12
Lux:	129.2	Studio:	Exterior
Kelvin:	560	Mired:	1785.7
Day:	Magic Hour	Night:	



Shot:	Close up figures	Focus:	6.56ft/2m
Move:	Slow zoom in	Height:	4.92ft/1.50m
Lens:	Sony G Master Zoom 18-105mm F4.0	Dist.:	6.56ft/2m
Filter:	No.	Roll:	A Card
T-Stop:	2.8 Gain: 0 dB	Slate:	4/9
Shutter:	180° 1/60	Fps:	29.97

Screenplay: **PAGE: 11 / Safe driving**

CONTINUED:

PICTURE 31 Exterior Mindszenti road Demerung

The camera is the lower machine shows the position of the rider as telephoto comes in and mop up the uphill road, behind it there is no death. The motorcycle crossed the road turns to the left side of the road and stop and look back. The death enters the picture from the left to the hands of the scythe, felt the distance between them.

SOUND: MUSIC(CONT'D)

PICTURE 32 Exterior Mindszenti road Demerung

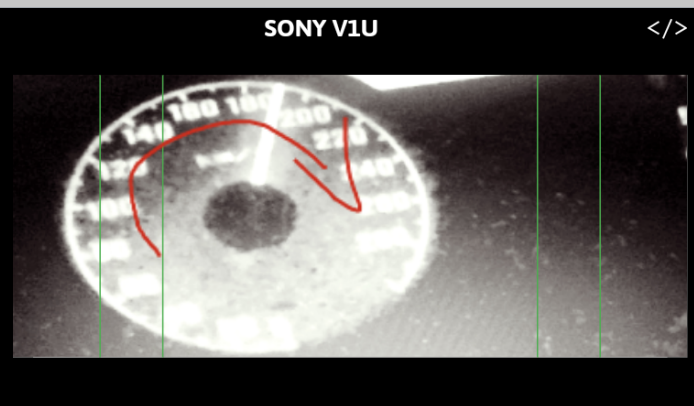
When you come up with the rider rising to the top and stops and looks back closeup picture. 32 / B. medium total.

SOUND: MUSIC(CONT'D)

PICTURE 33 Exterior Mindszenti road Demerung

The nearby Close up of the concrete road, when death enters the picture and the cloak hangs end of the scythe to the ground.

SOUND: MUSIC(CONT'D)

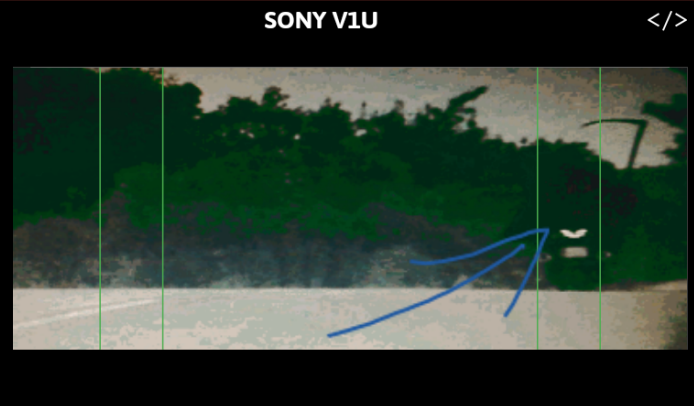


Shot:	Close shot	Focus:	0.98ft/0.30m
Move:	Camera stays fixed	Height:	4.92ft/1.50m
Lens:	Sony G Master Zoom 18-105mm F4.0	Dist.:	0.98ft/0.30m
Filter:	No.	Roll:	A Card
T-Stop:	2 Gain: 0 dB	Slate:	4/10
Shutter:	180° 1/60	Fps:	29.97

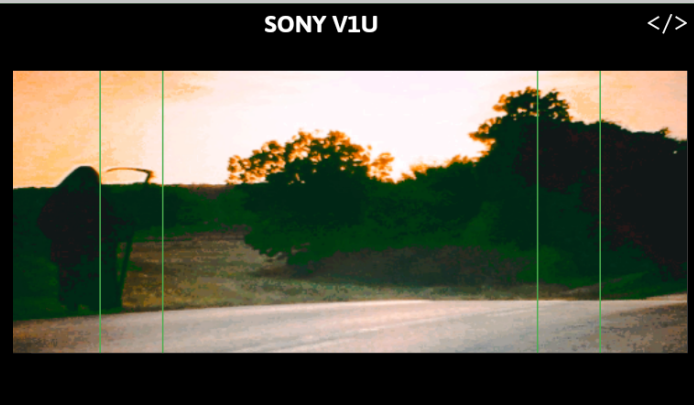
Sound Stage: **Mártély City - road between all the Mindszent City.**

Sound Description: **Music and Sennheiser boom. Atmo.**

Special Effect: **NO No.**



Shot:	Telephoto	Focus:	49.21ft/15m
Move:	Fix and follows actor move	Height:	0.98ft/0.30m
Lens:	Sony G Master Zoom 18-105mm F4.0	Dist.:	49.21ft/15m
Filter:	No.	Roll:	A Card
T-Stop:	6.3 Gain: 0 dB	Slate:	4/11
Shutter:	180° 1/60	Fps:	29.97



Shot:		Focus:	0ft/0m
Move:		Height:	0ft/0m
Lens:	Sony G Master Zoom 18-105mm F4.0	Dist.:	0ft/0m
Filter:	No.	Roll:	A Card
T-Stop:	3.2 Gain: 0 dB	Slate:	5/1
Shutter:	180° 1/60	Fps:	29.97



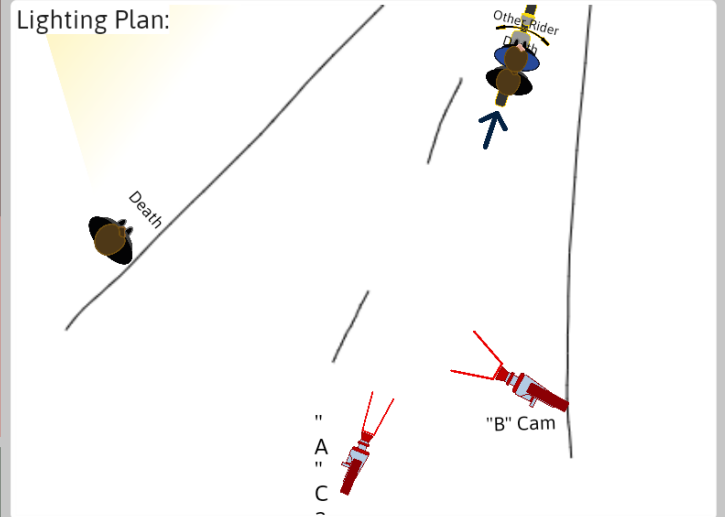
Shot:		Focus:	0ft/0m
Move:		Height:	0ft/0m
Lens:	Sony G Master Zoom 18-105mm F4.0	Dist.:	0ft/0m
Filter:	No.	Roll:	A Card
T-Stop:	3.2 Gain: 0 dB	Slate:	5/2
Shutter:	180° 1/60	Fps:	29.97

Film Stock: **16:9 Mode HD** LUT:"FG_CineWarm".cube

Film Rating: **ASA 500** F.candl.: **12** Lux: **129.2**

Studio Interior **Exterior** Kelvin: **560** Mired: **1785.7**

Dawn Day Dusk **Magic Hour** Night



Screenplay: **PAGE: 12 / Fatal victim**

CONTINUED:

PICTURE 34 Exterior Mindszenti road Demerung

The camera (31.es Close up) illustrates the rider as telephoto turn left but continued his journey begins more relaxed pace, leaving about death. The picture on the left edge picture on the mantle of death.

SOUND: MUSIC(CONT'D)

5 5. SCENE PICTURE 35 EXTERIOR MINDSZENTI ROAD EVENING 5

The camera is moving at a normal pace and the rolling wheels of the engine adapts, when suddenly from behind a motor speed bursts into the picture and drag it past him to sit behind him to death.

SOUND: MUSIC

PICTURE 36 Exterior Mindszenti road Evening

The camera shows the telephoto country road. From the left comes in a highspeed motor speed is sitting behind the Death on the road and drive as slowly disappearing at the bottom of the image. They go out of the picture. Here is sticking to the camera. They do not come into the picture from the bottom. The sun comes up. The title screen will be displayed. Then we see standing on the roadside waiting for death as the next one.

FADE OUT
SOUND: MUSIC AND GONG.

Sound Stage: **Mártély City - road between all the Mindszent City.**

Sound Description: **Music and Sennheiser boom. Atmo.**

Special Effect: **NO No.**